



HOPKINSVILLE WATER ENVIRONMENT AUTHORITY

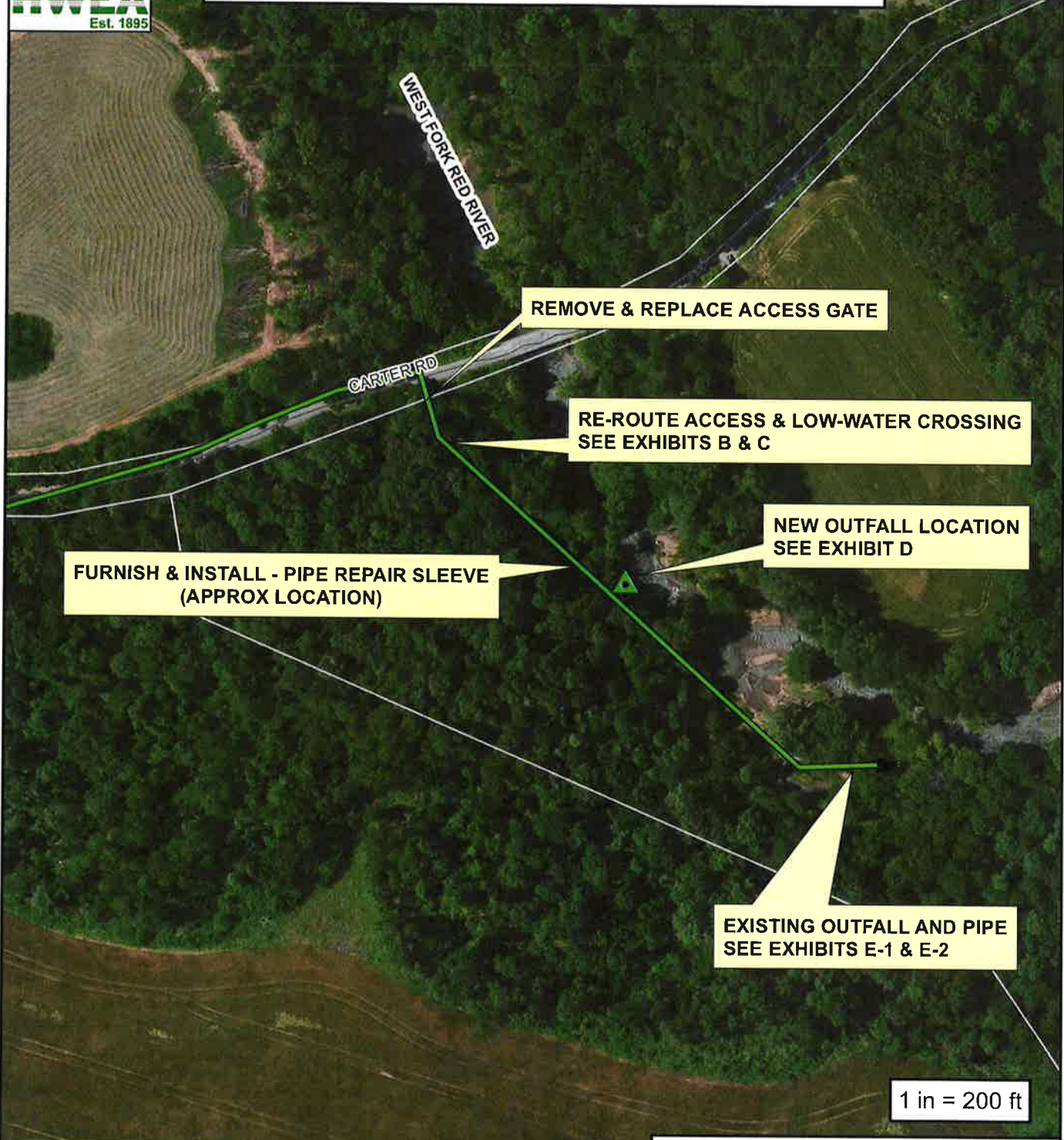
FY 2022 - 2023
Sealed Bid # 2223-11
Oak Grove WWTP Outfall Relocation

ATTACHMENTS

- Exhibit A - Vicinity Map
- Exhibit B - Access Route & Low-Water Crossing
- Exhibit C - Low-Water Crossing Detail
- Exhibit D - Sewer Construction Plan
- Exhibit E1 - Demolition Plan
- Exhibit E2 - Demolition Plan

SANITARY SEWER SYSTEM SECTION MAP

HOPKINSVILLE WATER ENVIRONMENT AUTHORITY
HWEA - Oak Grove Utility Division
Friday, September 16, 2022



**FURNISH & INSTALL - PIPE REPAIR SLEEVE
(APPROX LOCATION)**

REMOVE & REPLACE ACCESS GATE

**RE-ROUTE ACCESS & LOW-WATER CROSSING
SEE EXHIBITS B & C**

**NEW OUTFALL LOCATION
SEE EXHIBIT D**

**EXISTING OUTFALL AND PIPE
SEE EXHIBITS E-1 & E-2**

1 in = 200 ft

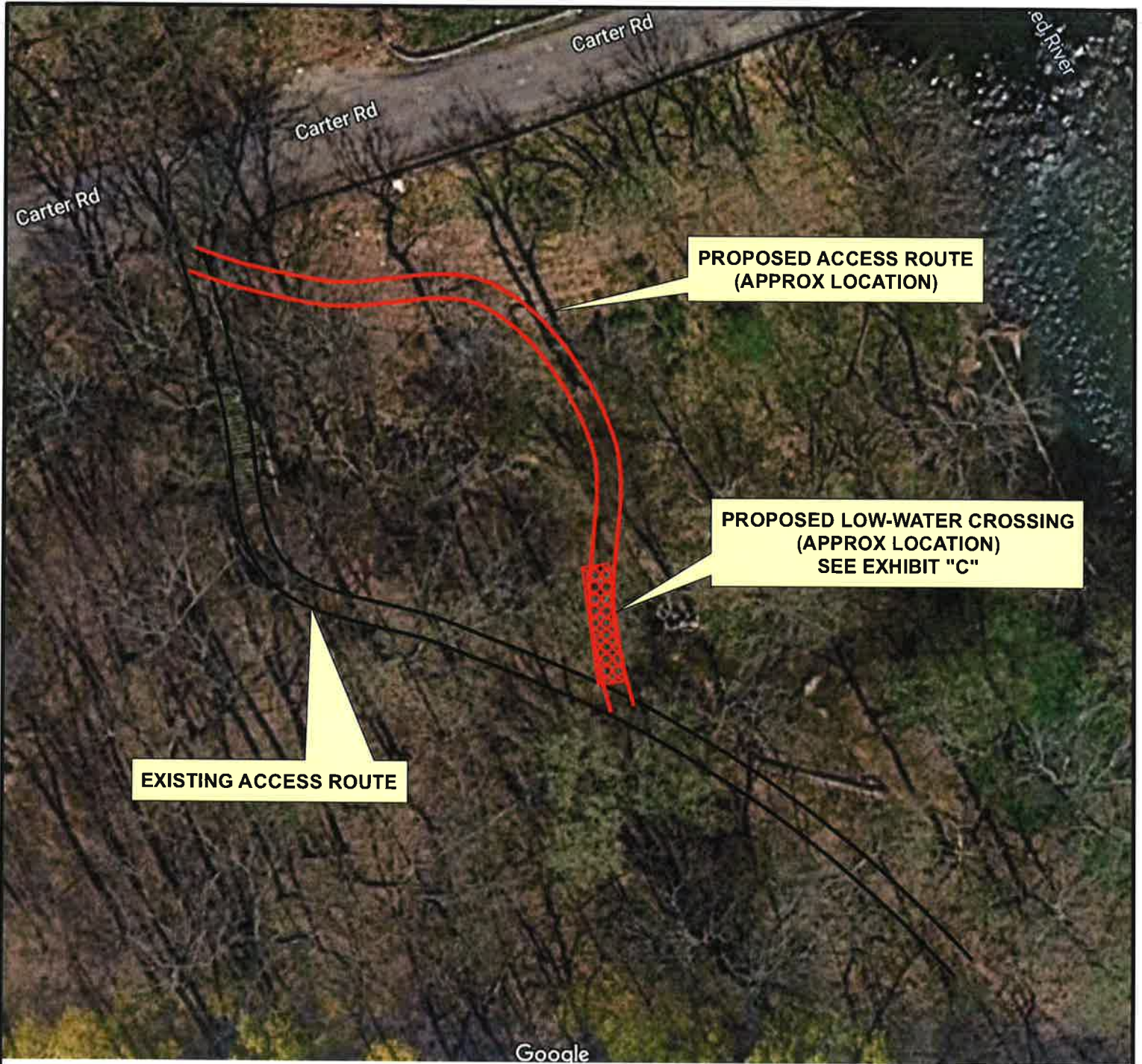
Legend

- Gravity Lines
- PVA Parcel Data

LIMITATION OF LIABILITY
The HWEA has no indication or reason to believe that there are any inaccuracies or defects of information incorporated into this document. The information contained in this document concerning the location and pipe diameter of underground utilities is not guaranteed to be accurate or all-inclusive.

Source: Esri, Dig DS, USDA, USGS

Author: TBarnett



EXISTING ACCESS ROUTE

**PROPOSED ACCESS ROUTE
(APPROX LOCATION)**

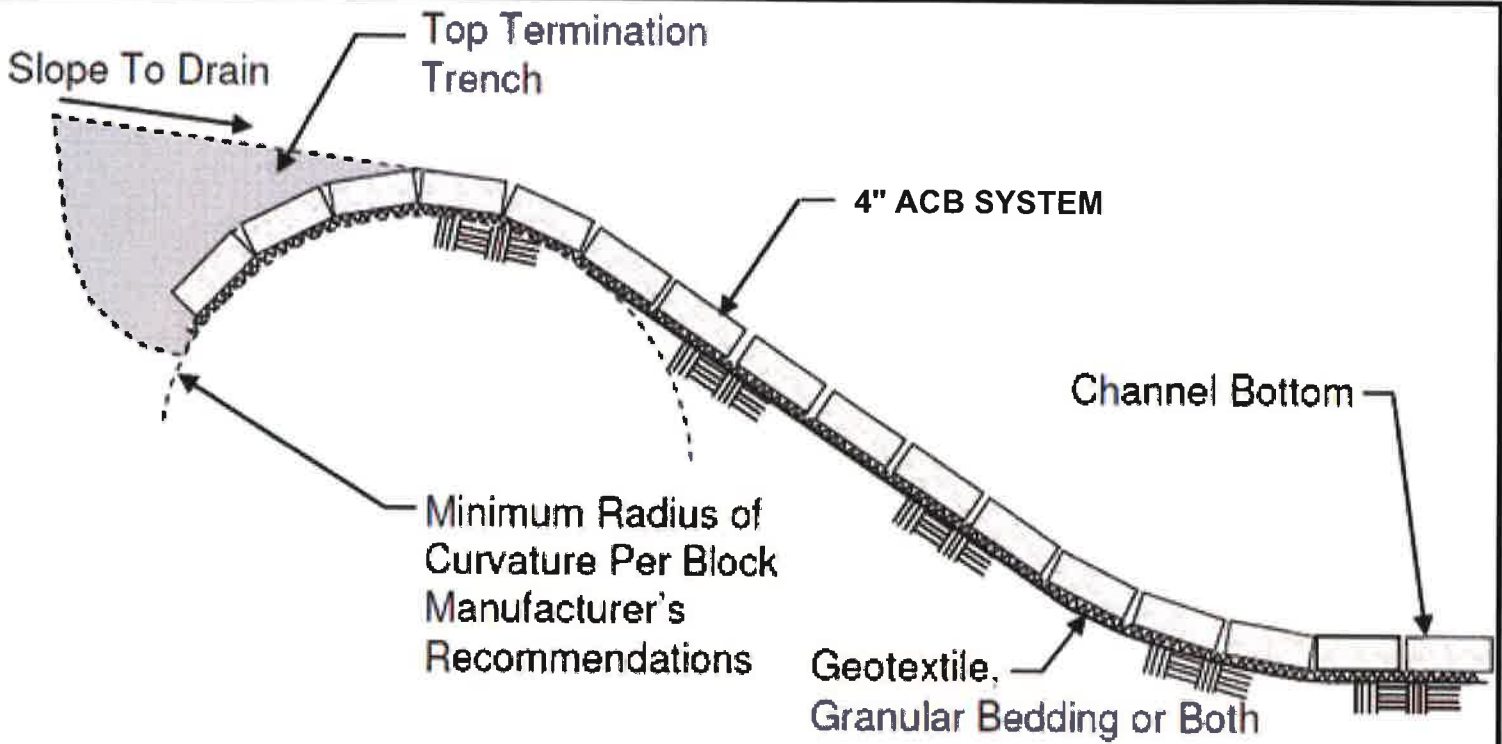
**PROPOSED LOW-WATER CROSSING
(APPROX LOCATION)
SEE EXHIBIT "C"**

Oak Grove WWTP Outfall Relocation



Hopkinsville Water Environment Authority
401 East 9th St - PO Box 628
Hopkinsville, KY 42241-0628
270-887-4246 www.hwea-ky.com

Exhibit "B"
Access Route & Low-water Crossing
9/16/2022



Construction Notes on Low-Water Crossing:

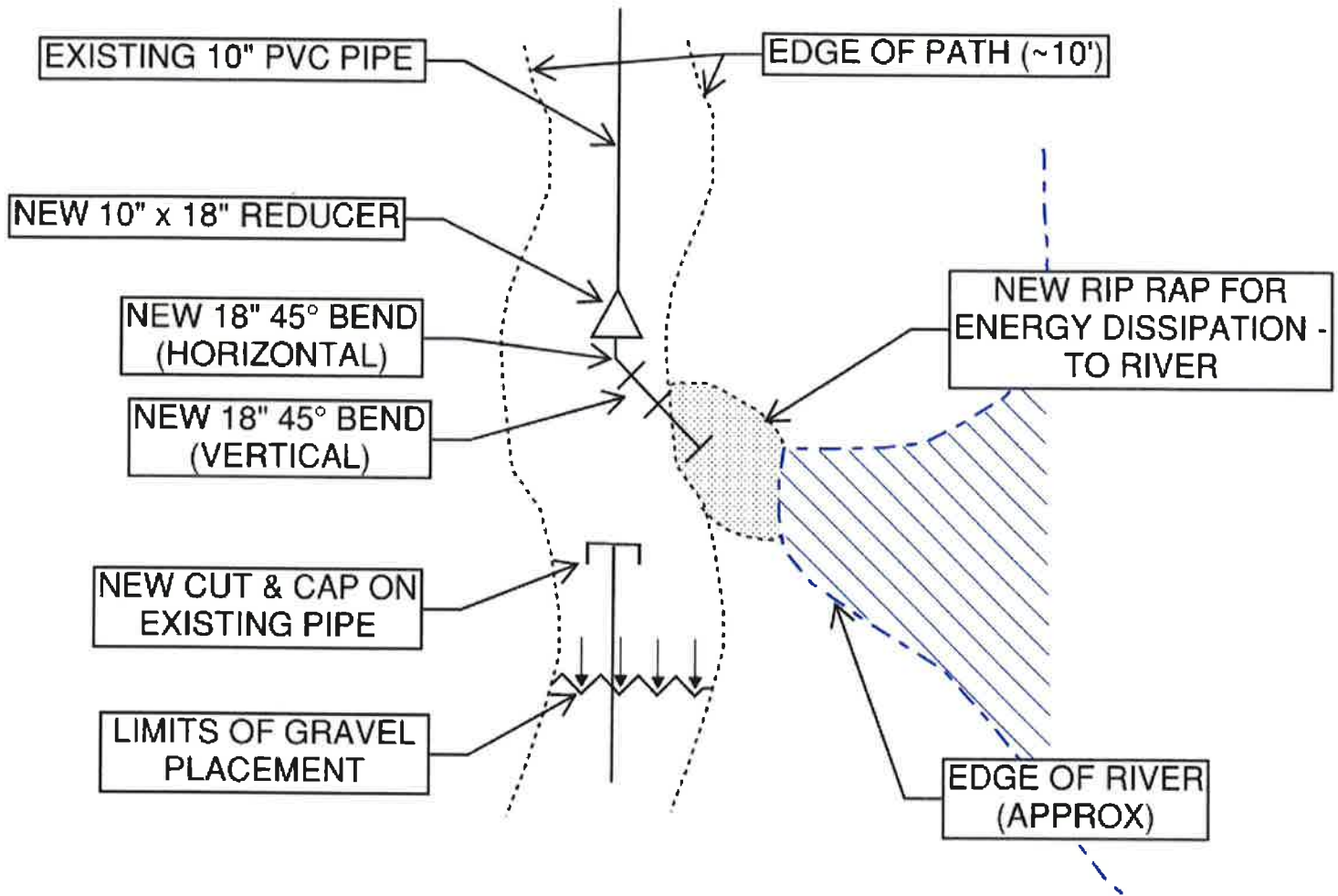
1. Approx. channel width is 50'.
2. ACB Crossing width to be 14'.
3. Approach(es) shall be graded at 4:1 for service truck access.
4. Channel Bottom to be at existing grade.

Oak Grove WWTP Outfall Relocation



Hopkinsville Water Environment Authority
 401 East 9th St - PO Box 628
 Hopkinsville, KY 42241-0628
 270-887-4246 www.hwea-ky.com

Exhibit "C"
 Low-water Crossing Detail
 9/16/2022

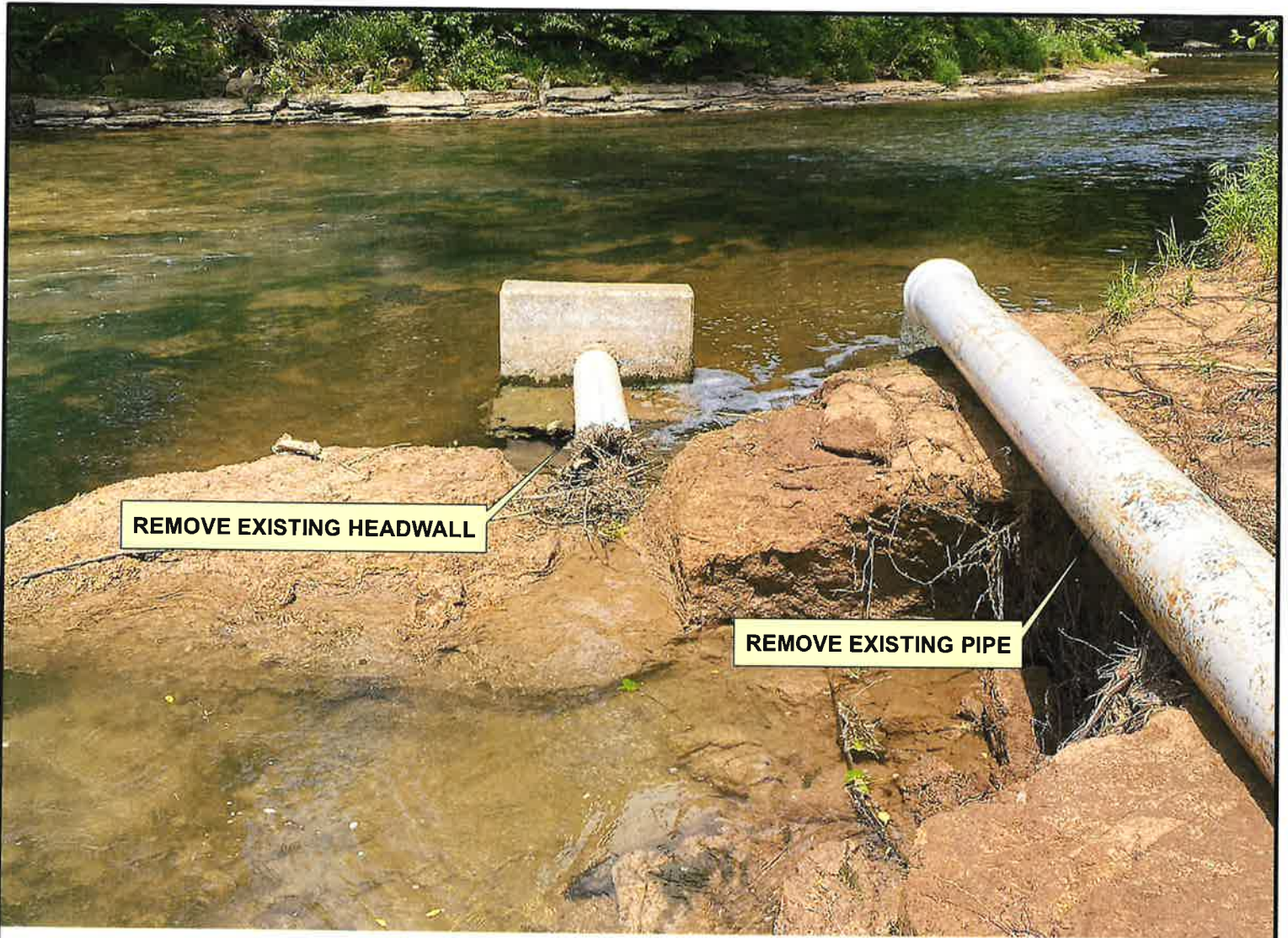


Oak Grove WWTP Outfall Relocation



Hopkinsville Water Environment Authority
 401 East 9th St - PO Box 628
 Hopkinsville, KY 42241-0628
 270-887-4246 www.hwea-ky.com

Exhibit "D"
 Sewer Construction Plan
 9/16/2022



REMOVE EXISTING HEADWALL

REMOVE EXISTING PIPE

Oak Grove WWTP Outfall Relocation



Hopkinsville Water Environment Authority
401 East 9th St - PO Box 628
Hopkinsville, KY 42241-0628
270-887-4246 www.hwea-ky.com

Exhibit "E-1"
Demolition Plan
9/16/2022



CUT & CAP / PLUG EXISTING PIPE WITH
MINIMAL BANK DISTURBANCE

REMOVE EXISTING PIPE

Oak Grove WWTP Outfall Relocation



Hopkinsville Water Environment Authority
401 East 9th St - PO Box 628
Hopkinsville, KY 42241-0628
270-887-4246 www.hwea-ky.com

Exhibit "E-2"
Demolition Plan
9/16/2022